



प्रादेशिकमौसमकेंद्र, कोलाबा, मुंबई
Regional Meteorological Centre, Mumbai

Dated: 25 July 2024

Time of issue: 1300hrs

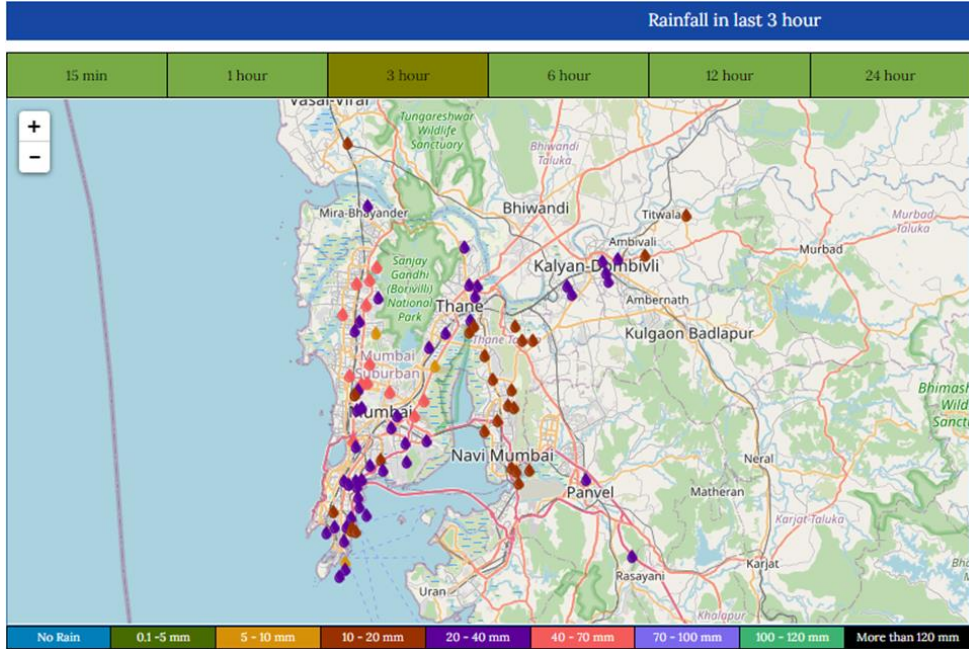
IMPACT BASED FORECAST FOR HEAVY RAINFALL OVER MUMBAI

Updates of Ongoing Heavy Rainfall Event -No 2

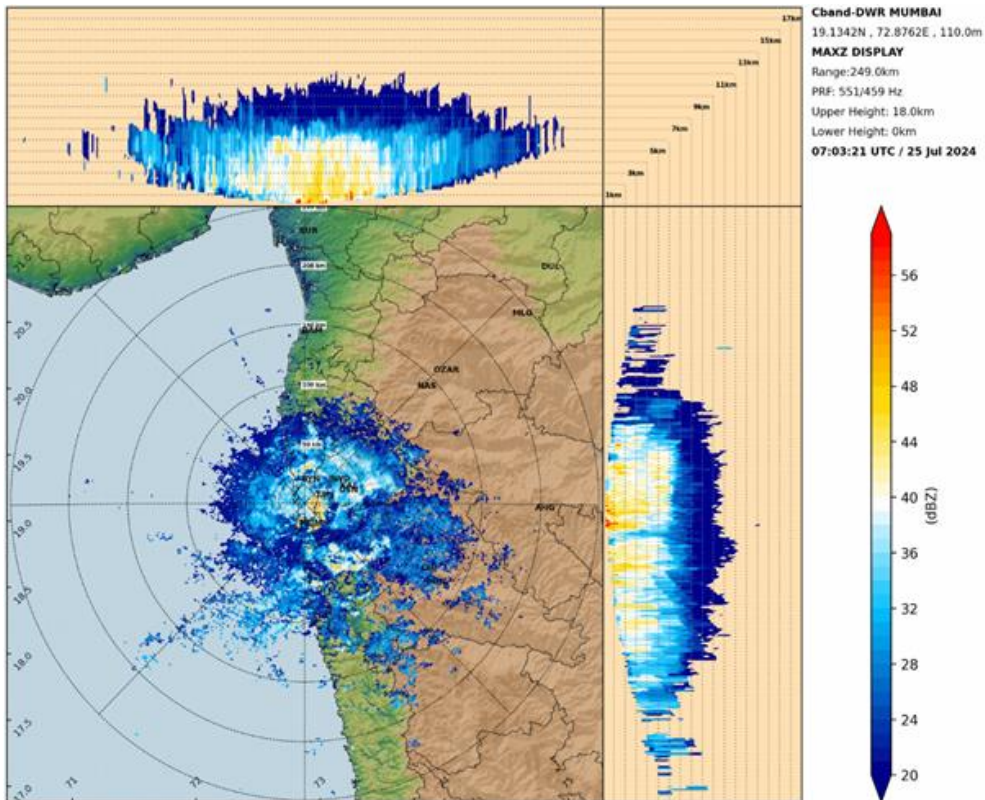
<p>Rainfall Realised at 1130 hrs IST of 25 July 2024</p> <p>(from 0830 hrs IST of 25 July 2024)</p>	<p>Mumbai city and suburbs experienced intense rainfall during past 3 hrs. (Map attached)</p> <p>Colaba - 29mm, Santacruz- 52mm, Matunga- 42mm, Mahalaxmi - 15mm, Ram mandir- 19.5 mm, Chembur -44mm, Sion -32.5 mm, Dahisar-53mm, Vikhroli -49mm</p>
<p>Nowcast Warning for next 3-4 hrs</p>	<p>As per latest observations, Mumbai city and suburbs are very likely to experience moderate to intense spells of rainfall during next 3-4 hours.</p>
<p>Warning for 24 hours</p> <p>(from 0830 hrs of the day to 0830 hrs of next day)</p>	<p>Heavy to very heavy rainfall in city and suburbs with possibility of extremely heavy rainfall at isolated places</p>
<p>Impact Expected</p>	<ul style="list-style-type: none">• Water logging/inundation in most parts of low-lying areas and river-banks• Disruption to road, rail, air and ferry transport.• Major roads and local trains affected.• Possibility of flash floods coinciding with high tide.• Local disruption of municipal services (Water, electricity etc.)• Possibility of danger to very old buildings and unmaintained structures.• Occasional gusty winds with speed reaching 60-70 kmph along and off the coast resulting in possibilities of damage to vulnerable /temporary structures.• Possibility of landslides/rockfalls/mudslides in hilly areas.• Rough Sea conditions along the coast.
<p>Action Suggested</p>	<ul style="list-style-type: none">• Traffic may be regulated effectively• People staying in vulnerable places may take caution.

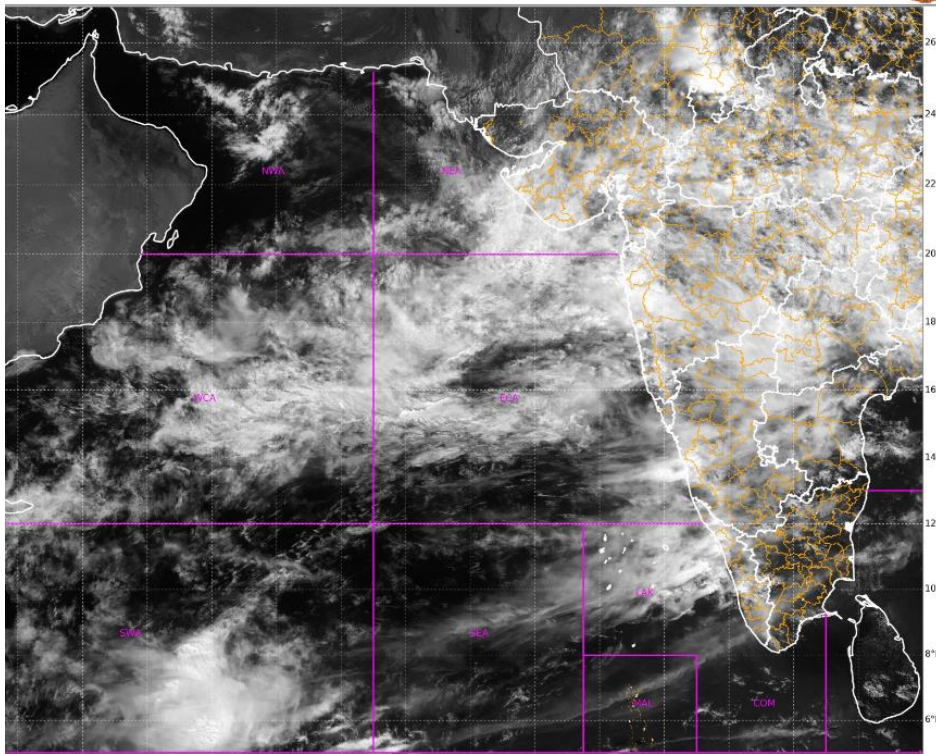
COLOR CODES	
Very Low	No action
Low	Be updated
Medium	Be prepared
High	Take Action

Rainfall realised during next 3 hours:



Current satellite and radar imagery:





Legends:

Rainfall Intensity			
Terminology	Rainfall Range	Terminology	Rainfall Range
Light Spell	1 cm /hr	Very Intense Spell	3-5 cm/hr
Moderate Spell	1-2 cm/hr	Extremely Intense Spell	5-10 cm/hr
Intense Spell	2-3 cm/hr	Cloud Burst	>10 cm/hr

Rainfall Categories			
Terminology	Rainfall (in mm)	Terminology	Rainfall (in mm)
Very Light Rainfall	Trace- 2.4	Heavy Rainfall	64.5-115.5
Light Rainfall	2.5-15.5	Very Heavy Rainfall	115.6-204.4
Moderate Rainfall	15.6-64.4	Extremely Heavy Rainfall	>=204.5

Regional Weather Forecasting Centre

RMC Mumbai

Phone: +91 022 22150431/22174719/22174735